



STORAGE SOLUTIONS

ALL PURPOSE ROUNDTOP GARAGE

ITEM# IS 10108 10' wide x 8' high x 10' long

MATERIALS	DESCRIPTION	QUANTITY
INCLUDED		
A	Side Curved Pipe Male/Female	6
B	Top Curved Pipe Male/Male	3
C	Top Curved Pipe Male/Female	3
D1	Horizontal Straight Purlins Male/Female	5
D2	Horizontal Straight Purlins Male/Male	5
E	Left Hand Corner Base	2
F	Right Hand Corner Base	2
G	Center Base	2
H	Long Connector Bolts	15
I	Short Connector Bolts	8
J	Corner Ratchets	4
K	Black Bungie Balls	62
L	Back Solid Panel/Zipper Door	1ea
N	Top Cover	1
O	Top Cover Lasing Ropes	2
P1	Diagonal Flat Bar	4
P2	Flat Bar Top Purlins	4
Q	Yellow Safety Caps	23

ADDITIONAL MATERIALS (NOT SUPPLIED)

·Foundation Options:

Ground Direct, Pressure-Treated Lumber
or Concrete Slab.

Ground Anchor Kit (Sold Separately)

Note: **Read Steps #1 and #2
to determine your specific needs.**

IMPORTANT NOTICE! PLEASE READ THESE INSTRUCTIONS COMPLETELY PRIOR TO ASSEMBLING YOUR STORAGE SOLUTIONS™ SHELTER!

- This high-quality Storage Solutions™ Round Top Shelter requires tie downs to serve your needs effectively.
- A heavy-duty base plate system is supplied; and can be bolted to any style of base system.
- Carefully following Steps #1 and #2 makes the remaining Round Top Shelter assembly easy and safe.



Watch for helpful assembly "HINTS" while following these instructions.

STEP 1

SITE CHOICE AND GROUND PREPARATION

This Storage Solutions™ Round Top Shelter is designed with a rigid frame system, allowing it to move in moderately windy conditions. Locating your shelter next to a natural or man-made wind block (e.g., building, fence, trees, hedges, etc.) is beneficial in case of severe wind conditions.

STEP 2

FOUNDATION CHOICES

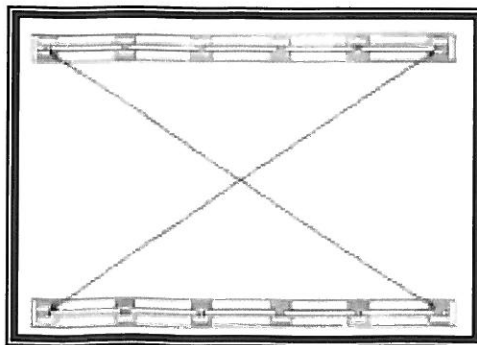
Your Storage Solutions™ Round Top Shelter includes heavy-duty plates (4 of them corner plates). Each plate has pre-drilled bolt holes and can be bolted direct to a foundation of your choice.



It is easier to align and square the shelter foundation if you attach base plates after assembly to a pressure-treated seal plate. The preassemble seal plate can then be anchored to a concrete foundation, or anchored directly to the ground using our ground anchor system (sold separately).



Do not anchor down the second line of plates and purlins until you make sure the two lines are square. This is easily accomplished using the diagonal measuring process. Diagonal measurements (from corner to corner) will be the same if squared correctly. **SEE DRAWING.**



STEP 3

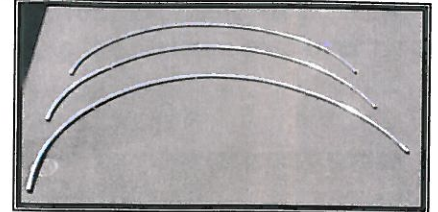
ASSEMBLY OF FRAMEWORK



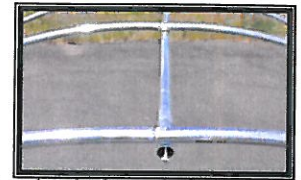
2 people assisting with framework assembly makes the task easier and safer.

CAUTION! The Storage Solutions™ Round Top Shelter frame design is flexible. Please be aware that overhead parts and/or pipes can come loose and fall during assembly. **DO NOT** allow children on or around the assembly site when erecting your shelter. And **ALWAYS** pay attention overhead for safety!

Assemble all 3 curved frames using items A, B & C. Place long connector bolts in center and short connector bolts in the other two top holes. Do not install nuts at this time.



Once all arches are assembled install long purlins (D1 & D2) from one arch to the next in the top center location (please do not over tighten the bolt and deform the tubing), follow the same procedure using flat bar top purlins (P2).

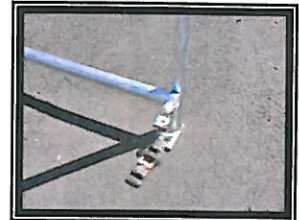


STEP 4

Using 1 left base (E) and 1 right base (F) along with 1 center base (G) create the left and right wall of the shelter connecting all bases together using straight purlins and long connector bolts (H). There are two diagonal flat bars (P1) connected from the center base to the top corners of the side wall. See photo after step 6.

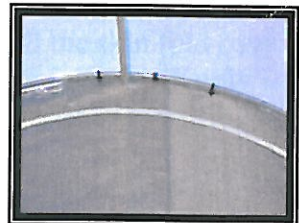
STEP 5 INSTALLING THE SOLID END PANEL AND DOOR PANEL

After determining which end will be the door and which will be the solid panel, use the supplied elastic cords to attach the panels to the end arches.



INSTALLING THE ROOF SKIN PANEL

The Storage Solutions™ Round Top Shelter includes a polyethylene roof skin and separate door and panels. This design provides maximum life at a very reasonable price.



NOTE: Please take great care when handling the roof skin to prevent scratching or piercing during installation. Place a ground tarp under the roof skin during assembly. Do not walk on the material at any time.

Unfold the roof skin and lay it next to the bottom purlin on one side of your shelter. Center the roof skin so approximately 6" of material extends beyond both ends of the framework. Using the supplied lacing rope, lace the bottom edge of the roof skin through the reinforced grommets to the bottom purlin.



PLEASE READ THIS WARRANTY CAREFULLY TO INSURE YOUR RIGHTS

LIMITED EXPRESS WARRANTY

Jewett-Cameron warrants your Storage Solutions™ Shelter to be free of defects in material and workmanship and Further warrants that, in normal use, the Storage Solutions™ Shelter is waterproof, will not tear, and will not be affected by mildew. This warranty is extended to the first retail purchaser of the Shelter for consumer use, and lasts for one (1) year from the date of purchase. Jewett-Cameron will replace any cover that is defective (unless those defects result from abuse or misuse of the cover, such as puncture or damage caused by excessive wind or heat). The replacement will be without charge to you, if you notify Jewett-Cameron in writing within the first six (6) months after date of purchase, but before the expiration of this Warranty, Jewett-Cameron will provide you with a replacement cover for 50% off its then-current retail price. Jewett-Cameron WILL NOT HAVE OTHER OR GREATER LIABILITY FOR DEFECTS IN THE COVER, NOR WILL JEWETT-CAMERON HAVE ANY INCIDENTAL OR CONSEQUENTIAL DAMAGES. Some States do not allow the exclusions or limitations of incidental or consequential damages, so the above limitation or exclusion may not apply to you. If you discover a defect in the cover during the warranty period, and wish to obtain a replacement, send notice of your claim to:

Jewett-Cameron
P.O. Box 1010
North Plains, OR 97133

Include your return address and phone number, and a copy of the original invoice or further proof of the date of purchase, plus a description of the claimed defect. ALL IMPLIED WARRANTIES, INCLUDING BUT NOT LIMITED TO IMPLIED. WARRANTIES OF MERCHANTABILITY AND FITNESS FOR PARTICULAR PURPOSE, ARE LIMITED IN DURATION TO ONE (1) YEAR FROM THE DATE OF PURCHASE. Some states do not allow limitations on how long an implied warrant lasts, so the above limitations may not apply to you. This Warranty gives you specific legal right, and you may also have other rights which may vary from state to state.

THIS PRODUCT IS NOT SOLD OR INTENDED FOR USE AS A FLAME RETARDANT ARTICLE: this product can be burned and under some conditions may continue to burn once ignited. This product meets the flammability requirements of commercial standards CS-192-53 (paragraph 4.10) for general purposes vinyl plastic film to which the Flammable Fabrics Act, Public law 88 refers. Storage Solutions™ Shelters, unless Specifically labeled for such use, do not meet the flammability standards for use as tent material.